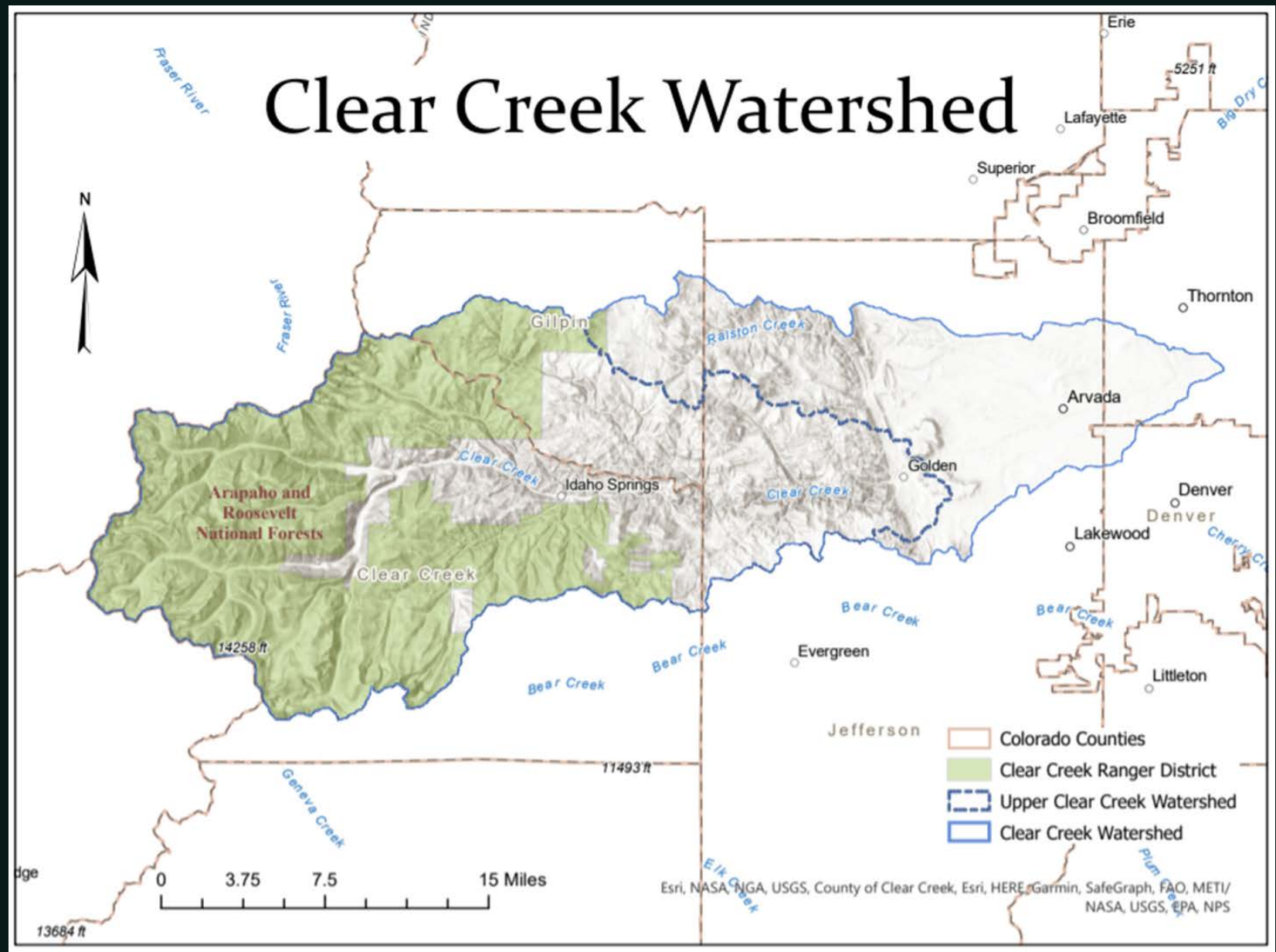


Clear Creek Watershed & Forest Health Partnership



MARCH 2, 2022

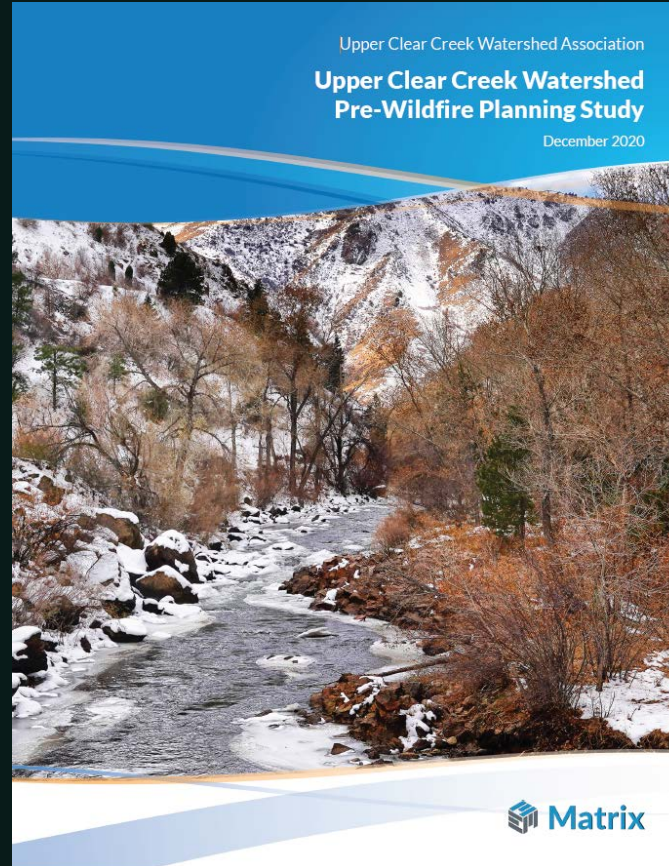




Who We Are – CCWFHP

MISSION

Engage in collaborative, cross-jurisdictional planning and implementation of wildfire risk mitigation and forest health projects within the Clear Creek watershed.



VALUES

- Safety
- Community
- Environment
- Resiliency
- Sustainability
- Feasibility

Brief Timeline

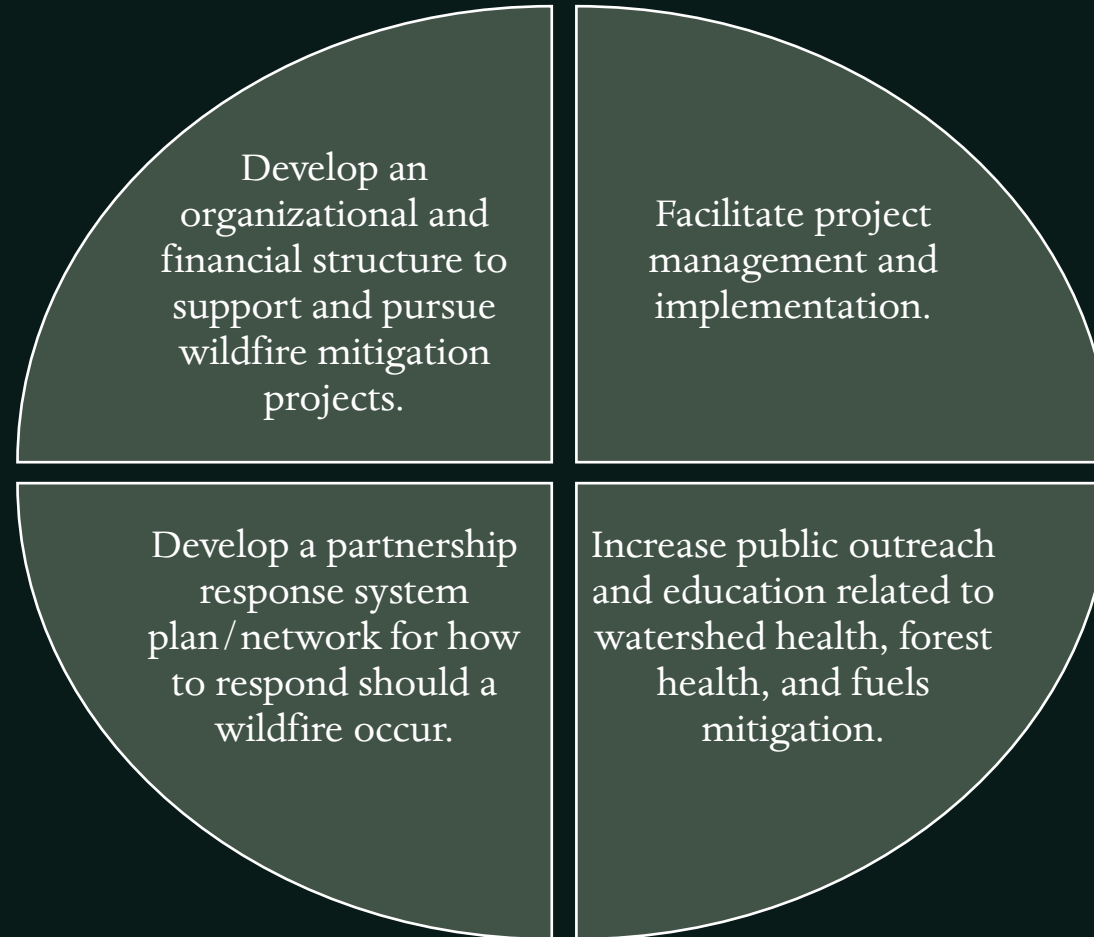


2020 Pre-Fire Planning Study by Matrix





Near Term Goals





Near Term Goals – Progress To Date

- MOU near signing
- 1 year of regular meetings, subcommittees
- \$34k match provided for coordination services
- Member of Northern Colorado Fireshed Collaborative & Fire Adapted Colorado





Near Term Goals – Progress To Date

- MOU near signing
- 1 year of regular meetings, subcommittees
- \$34k match provided for coordination services
- Member of Northern Colorado Fireshed Collaborative & Fire Adapted Colorado

Develop an organizational and financial structure to support and pursue wildfire mitigation projects.

Facilitate project management and implementation.

- CCFA received implementation match funds for FRWRM forest management projects (2 of the Top 12 Identified Projects)
- Identified Projects database used to plan 2022 WSRF scoping
- Grant opportunities & barriers identified for capacity & Identified Project implementation

Develop a partnership response system plan/network for how to respond should a wildfire occur.

Increase public outreach and education related to watershed health, forest health, and fuels mitigation.



Near Term Goals – Progress To Date

- MOU near signing
- 1 year of regular meetings, subcommittees
- \$34k match provided for coordination services
- Member of Northern Colorado Fireshed Collaborative & Fire Adapted Colorado

Develop an organizational and financial structure to support and pursue wildfire mitigation projects.

Facilitate project management and implementation.

- CCFA received implementation match funds for FRWRM forest management projects (2 of the Top 12 Identified Projects)
- Identified Projects database used to plan 2022 WSRF scoping
- Grant opportunities & barriers identified for capacity & Identified Project implementation

Develop a partnership response system plan/network for how to respond should a wildfire occur.

Increase public outreach and education related to watershed health, forest health, and fuels mitigation.

- Website in development: about pre-wildfire planning, CCWFHP, current & future projects, links to community resources
 - 2 outreach events in Feb 2022
- Metro BRT WSRF Engagement Grant for online project scopes, & risk/projects maps



Near Term Goals – Progress To Date

- MOU near signing
- 1 year of regular meetings, subcommittees
- \$34k match provided for coordination services
- Member of Northern Colorado Fireshed Collaborative & Fire Adapted Colorado

Develop an organizational and financial structure to support and pursue wildfire mitigation projects.

Facilitate project management and implementation.

- CCFA received implementation match funds for FRWRM forest management projects (2 of the Top 12 Identified Projects)
- Identified Projects database used to plan 2022 WSRF scoping
- Grant opportunities & barriers identified for capacity & Identified Project implementation

- Needs attention

Develop a partnership response system plan/ network for how to respond should a wildfire occur.

Increase public outreach and education related to watershed health, forest health, and fuels mitigation.

- Website in development: about pre-wildfire planning, CCWFHP, current & future projects, links to community resources
 - 2 outreach events in Feb 2022
- Metro BRT WSRF Engagement Grant for online project scopes, & risk/projects maps



Near Term Goals – Progress To Date

- MOU near signing
- 1 year of regular meetings, subcommittees
- \$34k match provided for coordination services
- Member of Northern Colorado Fireshed Collaborative & Fire Adapted Colorado

Develop an organizational and financial structure to support and pursue wildfire mitigation projects.

Facilitate project management and implementation.

- CCFA received implementation match funds for FRWRM forest management projects (2 of the Top 12 Identified Projects)
- Identified Projects database used to plan 2022 WSRF scoping
- Grant opportunities & barriers identified for capacity & Identified Project implementation

- Needs attention

Develop a partnership response system plan/ network for how to respond should a wildfire occur.

Increase public outreach and education related to watershed health, forest health, and fuels mitigation.

- Website in development: about pre-wildfire planning, CCWFHP, current & future projects, links to community resources
 - 2 outreach events in Feb 2022
- Metro BRT WSRF Engagement Grant for online project scopes, & risk/projects maps

Budget Update – LRE Water Services

- October 2021 through April 2022
- Status as of March 2, 2022: \$12,750 remaining in budget

LRE PSA Task	1A	1B	1C	1D	2A	2B	2C	
Task Description	Project Administration	Grant Applications	Meeting Coordination	Organizational Sustainability	Website Construction & Maintenance	Community Partnerships	Develop Reliable Communication Paths	Total
% Spent	91%	61%	73%	68%	36%	90%	55%	62%

Partner Action Items

-March 2022-

ALL PARTNERS: Review project implementation snapshots & provide input via Google form

IF your org is signing the **MOU** – obtain final approval by end of March

